



SSANGYONG

NEW CHAIRMAN
Success Drives



SsangYong Motor Company

Overseas Sales Headquarters
15th Floor, Postel Tower Building
735-3, Yeoksam-dong, Gangnam-gu
Seoul, 135-080, Korea
Phone: 82-2-3469-6532~5
Fax: 82-2-3469-6543
Internet: www.smotor.com

Some of the equipment shown in this brochure is optional and may not be available on all models or in all markets. All specifications are subject to change without notice. Please contact your local dealer for the latest information.

SWMC 200607 LHD ENGLISH Printed in KOREA



NEW CHAIRMAN



Chairman Cm600S sedan in Classic Black

Every day, you write a new page in your own personal success story. You are motivated by competition. You are inspired by excellence. You are driven by success. And Chairman is a luxury car that

NEW CHAIRMAN



Chairman Cm600S sedan in Classic Black

The title is reserved for an elite few. The experience is for all who aspire.

NEW CHAIRMAN

ELEGANCE DRIVEN



Chairman Cm600S sedan in Classic Black

In every line, curve, and accent, Chairman exudes elegance with impeccable fit and finish down to the smallest detail.

Some things never go out of style. And we designed Chairman to be one of them. While the sleek lines that have defined Chairman's quintessential European styling since its introduction in 1998 remain largely unchanged, we gave the new Chairman a notably more sculpted, masculine look. At the same time, we embraced the latest advances in optics technology, giving Chairman powerful new projection headlights and LED signal lights. These and a host of other subtle refinements make the new Chairman a perfect balance of classic form and modern function that's destined to become an elegant new luxury classic. 🌐





Chairman Cm600S sedan in Pertinent Silver

Amid the hectic pace of modern life, this is your oasis of calm.

NEW CHAIRMAN

NEW CHAIRMAN



Chairman Cm600S interior with all options

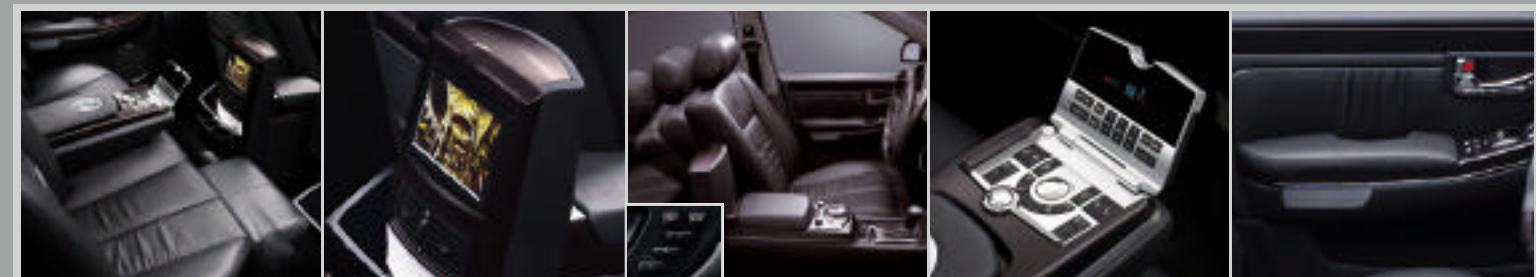
NEW CHAIRMAN

LUXURY DRIVEN



Chairman was designed with one thought in mind. Making travel as pleasant and relaxing as possible.

Luxury is more than just a list of fancy options. It is an experience of total quality and comfort. And the new Chairman doesn't disappoint. Soft leather seats and tasteful faux walnut trim set the mood for comfort. Starting with driver conveniences like an 8-way power seat with position memory for three drivers, we added a sophisticated new black-face instrument cluster with calming LED backlighting and a convenient overhead storage console with room for a pair of sunglasses and pens. Each seat now has a warmer with five comfort levels, and the VIP Seat package in limousine models gives the right rear passenger an extra measure of pampering with a power back massager and legrest. These and options like a 13-speaker DVD car theater system, 7-inch widescreen LCD monitor, and full audio system control from the rear seats are why every moment in the new Chairman is a moving experience. 🎧





Chairman Cm600S sedan in Classic Black

Happiness is a state of mind. This is a car designed to keep you in it.

NEW CHAIRMAN

TECHNOLOGY DRIVEN



Chairman Cm600S sedan in Classic Black



3.2-liter "Silky Six"



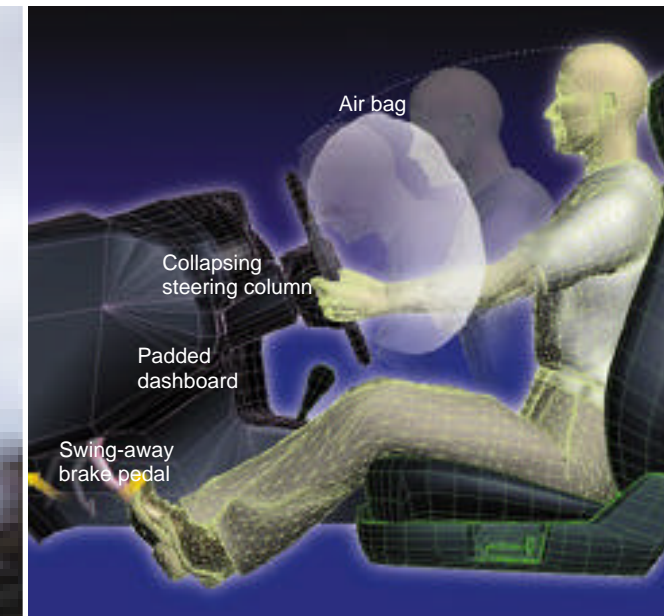
T-Tronic 5-speed automatic transmission with winter mode (Mercedes-Benz)

Chairman is a technological tour de force, a driving experience that soothes and satisfies the senses.

While classic styling may be timeless, technology is anything but. That's why we gave the new Chairman some of the most advanced engineering and electronics available. Chairman's quietly muscular 3.2-, 2.8-liter DOHC engines and silky smooth T-Tronic 5-speed Mercedes-Benz automatic will effortlessly power you into the fast lane of life. Every major vehicle subsystem is linked by a "CAN bus" or controller area network that enables Chairman to achieve superior performance at all levels. The sophisticated damper-strut front and modular multi-link rear suspensions are equally impressive, particularly when combined with the electronically controlled suspension option. Chairman's ECS system monitors the speed, braking force, and lateral and vertical motion of each wheel, continuously and independently adjusting damping for agile handling and an ultra-smooth ride. And that's why every Chairman trip is a comfortably memorable one. 🗎



SAFETY DRIVEN



Driver safety features



Rearview camera

Chairman excels at keeping you safe and sound every moment you're on the road of life.

Cars are always judged by how well they protect in accidents. We designed the new Chairman to be judged by how well it avoids them. Chairman improves nighttime visibility with electrochromatic mirrors that automatically adjust to prevent glare. Backing safety is enhanced by sideview mirrors that automatically tilt downward as well as an obstacle warning system and rearview camera. The new Chairman also has a next-generation ABS and traction control system known as ESP or electronic stability program. ESP continuously compares driver control input with vehicle response, intelligently applying braking to prevent oversteer and understeer. When the unavoidable happens, Chairman reacts in the blink of an eye, deploying the air bags as the brake pedal swings up and away from the driver's legs. An advanced forked-member front structure also provides outstanding passenger compartment protection, a key reason Chairman far exceeds U.S. safety standards in the benchmark 40% offset collision test. And that's the kind of peace of mind you can count on when you own a Chairman.



NEW CHAIRMAN



Chairman Cm600L limousine in Classic Black

True leader does not show off his authority.

Chairman has its own philosophy. - New Chairman Limousine

CHAIRMAN LIMOUSINE

More features mean a safer, more comfortable,
more enjoyable driving experience for you and your family.

Option Packages



Performance

- Intelligent electronically controlled suspension with precision control over vehicle pitch, bounce, dive, roll, and squat



Premium AV

- DVD player
- AV input
- 6.5-inch front touchscreen LCD
- Requires Deluxe Audio package



Luxury

- Leather upholstery for seats and door trim



Theater & Rearview camera

- 252-watt amplifier with 13 speakers
- 7.1-channel surround system
- Rearview camera
- Requires Premium AV package



Privacy

- Power sunshade for rear window
- Roller blinds for rear side windows



Open Air

- Power sliding and tilting sunroof
- Rear reading lamps



Deluxe Audio

- Electronically tuned AM/FM stereo cassette audio system
- 6-CD autochanger
- Rear armrest audio system controls
- Steering wheel audio system controls



Windows

- Solar control windshield
- UV filter door and rear windows
- Rain sensing wiper

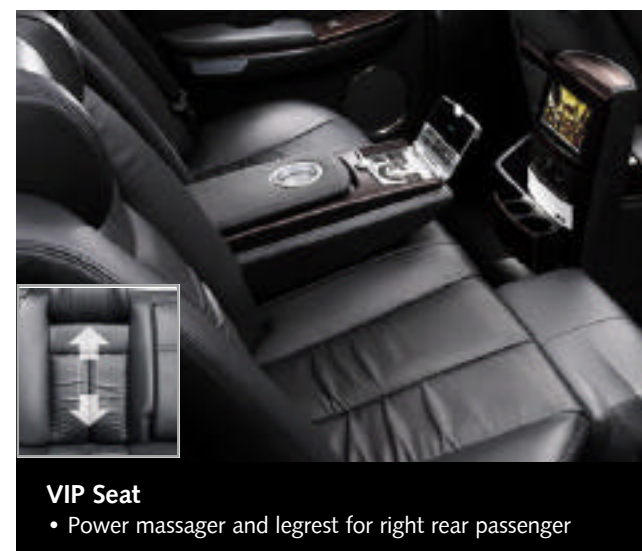
Option Packages



Summer & Winter

- Front ventilated seats with two comfort settings
- Seat warmers for front with three comfortable settings and for rear with five comfort settings
- Requires Luxury package

Rear ventilated seats : Cm600S option



VIP Seat

- Power massager and legrest for right rear passenger

Available Features

Models	Cm600L	Cm600S	Cm500S
Option Packages			
Performance	O	O	O
Luxury	S	O	O
Privacy	S	O	O
Deluxe Audio	S	O	O
Premium AV	O	O	O
Theater & Rearview camera	O	O	O
Open Air	—	O	O
Windows	O	O	O
Summer & Winter	S	O	O
VIP Seat	O	—	—

Individual Options

Front ventilated seats	O	P	P
Rear ventilated seats (available with Summer & Winter Package)	S	O	—
Electronic stability program with brake assist system	S	S	O
Leather steering wheel with woodgrain accent (available with Deluxe Audio Package)	O	O	O
17" alloy wheel with P215/55R17 tires	O	O	O
17" chrome-plated alloy wheel with P215/55R17 tires	O	O	O
7-inch rear LCD monitor (available with Premium AV Package)	O	O	—
8-DVD auto changer (available with Theater & Rearview camera)	O	O	O
Auto-dimming outside mirror	O	S	S
Rear obstacle warning system	S	O	O
Electric power trunk	O	O	O
Variable air purification system with ion generator	S	O	—

S : Standard O : Option P : Option package — : Not available

The specifications, features, and equipment detailed in this brochure are based on current information at the time of printing. Ssangyong Motor Company reserves the right to make changes at any time without prior notice. Dealers and distributors should contact their Ssangyong Motor Vehicle Export Division representative for detailed information on the models and equipment available for sale in their markets.

Standard Features

Comfort & Convenience

8-way power driver's seat with easy access mode and three memories for seat, steering column, and mirror position

4-way power front passenger seat

2-way power rear passenger seats with easy access mode

Power-folding sideview mirrors with auto downward tilting when backing

Power sideview mirrors with defrosters

Seatback table for right rear passenger

Black-face instrument cluster with LED backlight

Power tilting and telescoping steering wheel

Power windows

Dual sunvisors with illuminated vanity mirrors

Cruise control

Noise-damping windshield

Auto headlight activation and shut-off

Auto-intermittent wiper with deicer

Timed rear window defroster

Parking brake warning

Fully automatic climate control with air quality system

Faux walnut dash, shift knob, and door trim

Overhead console with pen and eyeglass storage*

Door courtesy lamps

Map pockets

Lighted rear vanity mirrors*

Two movable illuminated ashtrays

One adjustable rear footrest

Trunk net

Rear armrest with storage console

Cupholders for the rear passengers with heating and cooling features

Appearance

16-inch alloy wheels with P215/60R16 tires

Two-tone paint

Tinted glass

Projection headlights

LED turn signal and brake lights

Single-arm wiper

Door sill inserts with lamp

Mechanical

T-Tronic 5-speed automatic transmission with winter mode (Mercedes-Benz)

Damper-strut front suspension

Multi-link rear suspension

Power-assisted ball-and-nut steering

Gas strut hood and trunk opening

Gas shock absorber

Safety & Security

4-wheel, 4-channel ABS

ESP traction control with emergency braking assist†

Front and side air bags

Seatbelt pretensioners with tension reducers

Swing-away brake pedal

Padded dashboard

High-mounted stop lamp

Brake pad replacement indicator

Remote keyless entry system with controls for sideview mirror folding, window closing, and panic alarm

Key-based immobilizer

8" + 9" tandem booster

Auto-dimming rearview mirrors

Auto-dimming sideview mirrors (Cm600L option)

* Not available with Open Air option package.

† Cm500S option.

Limousine

Additional Features

Leather seat and door upholstery

Variable air purification system with ion generator

6-CD autochanger

Premium audio with 220-watt output and 10 speakers

Remote audio system controls on steering wheel

Front ventilated seats with two comfort settings

Seat warmers for front with three comfort settings and for rear with five comfort settings

Rear obstacle warning system

Power rear-window sunshade and side-window roller blinds

Two deluxe adjustable rear footrests

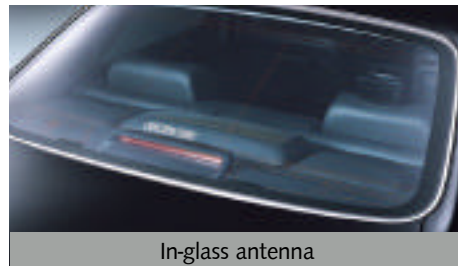
Rear center console footlamp

Technical Data

MODEL		Cm600L	Cm600S	Cm500S		
DIMENSIONS & WEIGHTS	Overall length	(mm)	5,435	5,135	5,135	
	Overall width	(mm)	1,825	1,825	1,825	
	Overall height	(mm)	1,475	1,465	1,465	
	Wheel base	(mm)	3,200	2,900	2,900	
	Track	Front	(mm)	1,550	1,550	1,550
		Rear	(mm)	1,540	1,540	1,540
	Min. ground clearance	(mm)	192	180	180	
	Min. turning radius	(m)	5.9	5.4	5.4	
	Curb weight	(kg)	1,861	1,782	1,768	
	Gross vehicle weight	(kg)	2,280	2,280	2,280	
INTERIOR	Length	(mm)	2,320	2,020	2,020	
	Width	(mm)	1,495	1,495	1,495	
	Height	(mm)	1,185	1,185	1,185	
	Couple distance	(mm)	1,207	907	907	
ENGINES	Type		Inline-6 DOHC	Inline-6 DOHC	Inline-6 DOHC	
	Fuel		Gasoline	Gasoline	Gasoline	
	Bore x stroke	(mm)	89.9 x 84	89.9 x 84	89.9 x 73.5	
	Displacement	(cc)	3,199	3,199	2,799	
	Compression ratio		10:1	10:1	10:1	
	Fuel tank capacity	(liters)	80	80	80	
	Max. output	(kW/rpm)	162/6,000	162/6,000	148/5,900	
		(ps/rpm)	220/6,000	220/6,000	197/5,900	
	Max. torque	(Nm/rpm)	314/4,600	314/4,600	271/4,700	
		(kg·m/rpm)	32/4,600	32/4,600	27.5/4,700	
TRANSMISSION	Clutch		Torque converter			
	Transmission type		T-Tronic 5-speed automatic transmission with winter mode (Mercedes-Benz)			
	Gear ratios	1st		3.951		
		2nd		2.423		
	3rd		1.486			
	4th		1.000			
	5th		0.833			
	Reverse 1st		3.147			
Reverse 2nd		1.926				
CHASSIS	Steering system		Power-assisted ball-and-nut			
	Suspension	Front		Damper strut		
		Rear		Modular multi-link		
	Brakes	Front/Rear		Power-assisted ventilated disc/solid disc		
	Tires		215/60R16, 215/55R17			
	Wheels		16-inch alloy, 17-inch alloy			
FUEL CONSUMPTION	Urban	(l/100 km)	17.34	17.34	16.88	
	Extra urban	(l/100 km)	10.14	10.14	9.80	
	Combined	(l/100 km)	12.78	12.78	12.39	



Auto-dimming rearview mirror



In-glass antenna



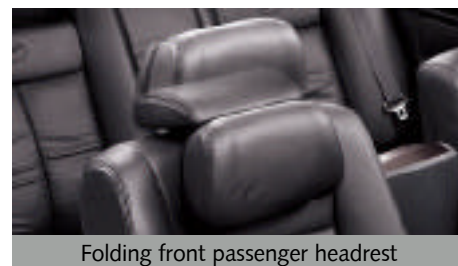
Front mood lamp



Auto headlight activation



Spacious trunk



Folding front passenger headrest

Comfort and Luxury Everywhere You Look



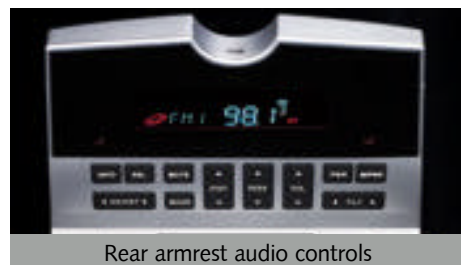
Power trunk with remote control



Keyless entry remote



Noise-damping windshield



Rear armrest audio controls



Movable illuminated ashtray



Center console



Dual sunvisors with vanity mirror



8-DVD auto changer



Cupholders with heating and cooling features



Climate control system

This fully automatic system now offers an additional air purification unit on the back shelf to keep Chairman refreshingly clean.



Seatback table

Found on Chairman limousines and sedans with the Comfort package this practical luxury makes it easy to be productive on the road.



7.1-channel surround sound

With a DVD player and 13 speakers, Chairman's Theater package will put you right in the middle of the movie action.



3-person memory system

Custom position memories for three drivers, including seat, steering column, and all mirror positions

The New Chairman Family



Cm600L

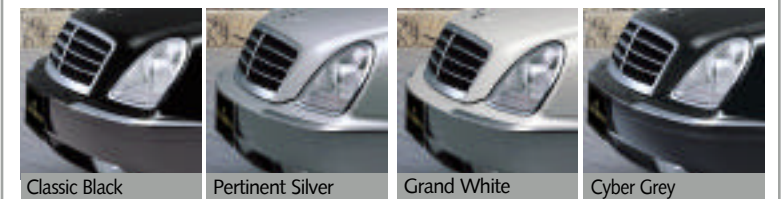


Cm600S



Cm500S

Actual colors may vary slightly due to limitations in the printing process.



Classic Black

Pertinent Silver

Grand White

Cyber Grey



17" chrome-plated alloy wheel

17" alloy wheel

16" alloy wheel